

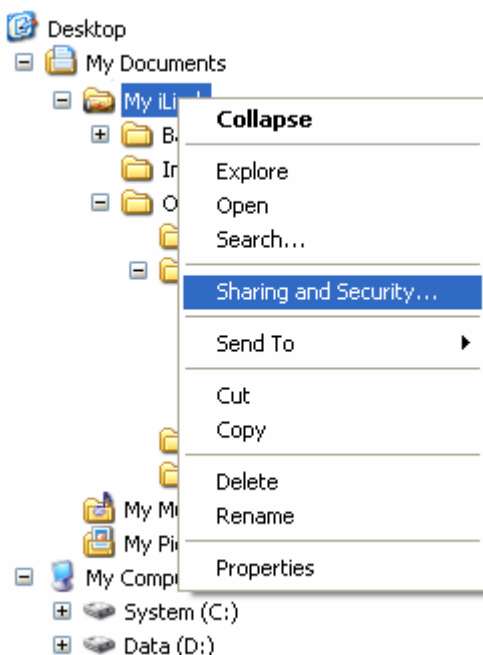
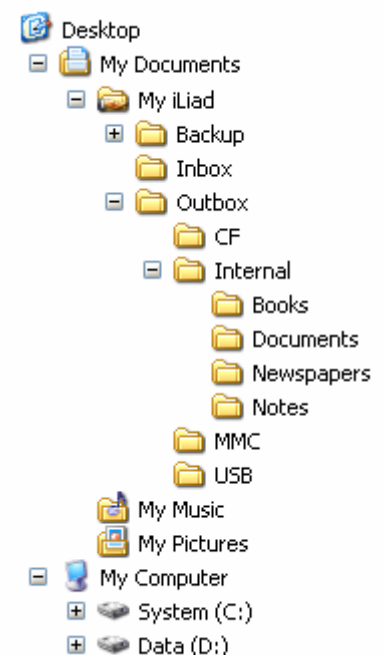
Connection

The iLiad can connect to an office network using WIFI or wired LAN connection. This connection is normally used to locate the iDS which is located on a fixed IP address outside the corporate network. It can also be used for sending and receiving documents to/from a PC that is located on that same network (so making use of the local area network and not the internet).

Setup the PC

When an iLiad connects to a PC it will search for a specific folder on the PC, in the example as indicated in the image on the right a folder called *My iLiad* is created in the *My Documents* folder. In this folder 3 sub-folders are available, each for a specific task. The *Backup* folder holds a backup of the iLiad when the iLiad Companion Software is used. The *Inbox* holds documents that are send by the iLiad to the PC, in the *Outbox* documents can be placed that will be send to the iLiad the next time it connects to the PC. The sub-folders in the *Outbox* folder provide direct control in which memory location the document will be stored.

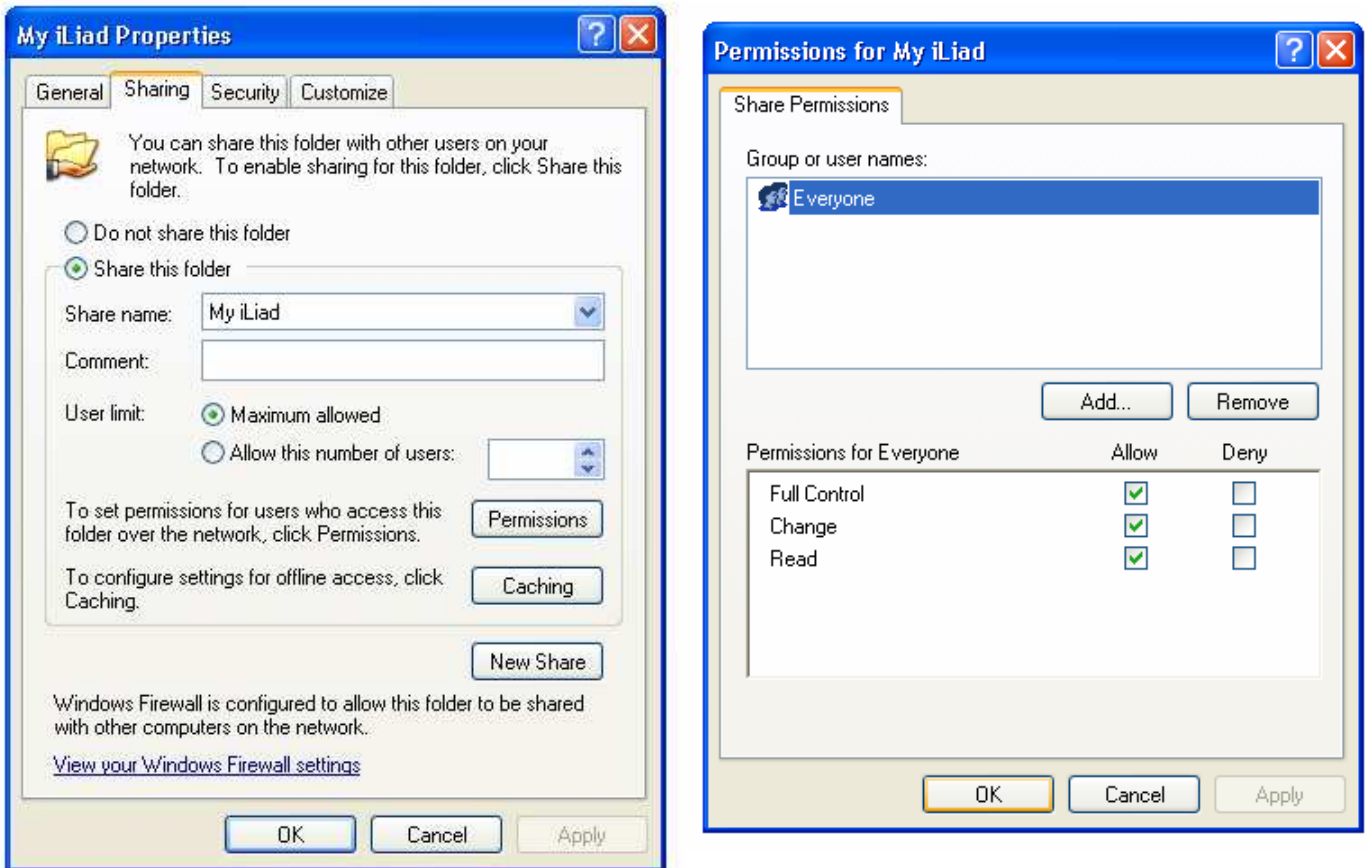
By sharing a folder other devices can visit the PC using the network and use the folder (including it's sub-folders) as a local disk. This technology is also used by the iLiad, so the share functionality of the *My iLiad* must be enabled.



In order to do so, right click on the *My iLiad* folder and select the *Sharing and Security...*

option in the menu as indicated in the image on the left.

This will display the sharing properties dialog of the *My iLiad* folder, see the lower left image. Click on the bullet in front of the Share this folder option, provide a name for the shared folder. Please **remember this name** since it will be needed when the settings on the iLiad are made. Make sure the *User Limit* is set to *Maximum allowed* and click on the *Permissions* button to activate the permissions dialog as shown on the lower right image. Set the permission so that the iLiad can have full control of the folder and that it can change and read files.



Click on the OK button in the permission dialog and on the OK button in the properties dialog. After this a small hand will appear under the My iLiad folder to indicate it is successfully shared.

If your PC is part of a corporate network it might be possible that you have restricted or no access to some features. Sharing might be one of them in which case you will need to call your system support. They can log on to your PC as administrator after which they can do above actions.

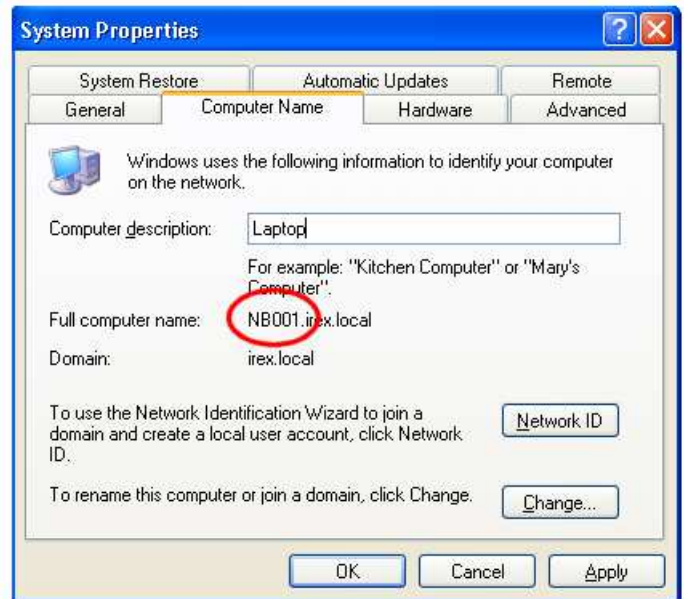
Setup the iLiad

In page 3 of the iLiad settings the connection must also be configured.

Step 1: The name of your computer

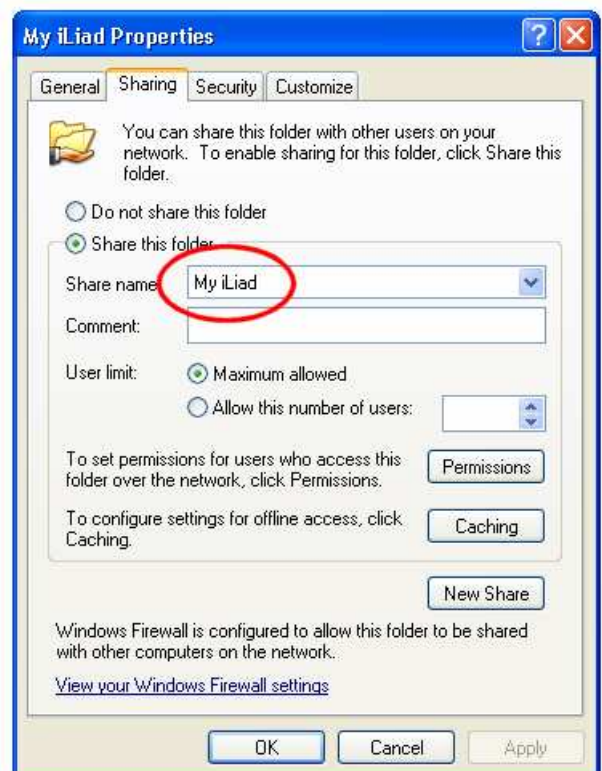
Click on *My Computer* icon on your desktop and select the Control Panel or select the Control panel in the start menu. In the Control panel double click on the *System icon* to display the system properties dialog and select the *Computer name* tab.

The name of your computer is displayed here. In case your PC is part of a domain your full computer name will be extended with a dot and the domain name. In this case remove the domain name from the computer name. In the example shown in the right image the domain is irex.local, the computer name is NB001 which should be entered in step 1 of the computer connection settings on your iLiad.



Step 2: The name of the shared destination folder

This is the name that you provided when sharing the folder on your PC.



Step 3 and 4: Domain, User name and password

When you log on to Windows you will need to provide an user name and a password. If you are working in a domain or workgroup than you also need to select this. Below image shows a typical logon dialog and how they need to be copied to the iLiad. If you don't use a domain or workgroup than also leave it blank on the iLiad.



Step 4, User name

Step 4, Password

Step 3, Domain or workgroup